

קול קורא



Summer 2025

KOL KORE

The Newsletter of Temple Emanuel Kensington, Maryland

Welcome



**Cantor
Lauren Adesnik**



**Executive Director
Alissa Miller**

from the Rabbi

Summer has arrived! Since childhood, summer has easily been my favorite season; I've always enjoyed hanging out by the pool, spending time outdoors, going to northern Michigan for a week at family camp, and enjoying all the delicious summer bounty like sweet corn, tomatoes, and peaches.

While summer is generally a quiet time on our Jewish and Temple community calendars, this one is shaping up to being more exciting than usual. I am thrilled to be welcoming two new staff members July 1st- Cantor Lauren Adesnik and Alissa Miller who will serve as our Executive Director. I was involved in both of the search processes and I believe we found the perfect matches for our warm and welcoming community. Cantor Adesnik will bring with her a love of making Jewish music engaging and accessible along with community building, and Alissa will bring her expertise on creating efficient and well-run protocols and systems to modernize and streamline aspects of our organization. I am grateful to all of you for your help in the search process, and especially to Martha Hirschfield who chaired the cantorial search committee, and Joan Lorber and Lisa Reff who co-chaired the executive director search committee. There will be many opportunities to get to know Cantor Adesnik and Alissa over the coming months, but if you're in town, we'd love to see you at the July 11th Shabbat service which will be followed by a festive welcoming oneg featuring our two new staff.

Summer is also the time when we prepare for the upcoming programming year. Our senior staff will hold its annual three day retreat which gives us time and space to bond, to vision and dream, to take time to discuss topics which are difficult to conquer in our weekly staff meetings, and to plot out the meaningful yet often complicated and full programming calendar of the synagogue.

As we look towards the future, I want you to know that our community is in a good place thanks to all of you. Despite the various external obstacles, the war in Israel and Gaza, the chaos and upsetting changes in the federal government, and the tragic death of Dianne Neiman this past spring, I am confident that Temple Emanuel can continue to fulfill its mission to be a center of Jewish living and learning in Montgomery County. For those of you who have stepped up in the midst of financial uncertainty to make more significant pledges to the Temple, thank you. It means so much to know you are there for us. I encourage all our members to do what you can to help make up the deficit in our budget. If you have the means and are able to stretch your gift, you will help to ensure that Temple Emanuel continues to thrive.

The Fall and the High Holy Days will be here before you know it, but for the next few months, try to relax a little, get outside (or inside into the air conditioning on those blistering hot and humid days), and remember that we are still here, excited to see you during our Friday night Shabbat services and Torah studies, or for whatever else you and your loved ones might need over the season.

Rabbi Adam Rosenwasser



Empty Nesters: The Wonder Years Chavurah



Calling all current or soon-to-be empty nesters! Join us for monthly gatherings, local adventures, and opportunities to connect with others at this stage of life. If you have questions or suggestions, please email Lucia Saperstein at lmsaperstein@gmail.com

Apple Picking and Winery Tasting
September 21 (Rain Date Sept. 28)
in Poolesville, Maryland
from 2-6pm

Join us for apple picking at Homestead Farm followed by a visit to Rocklands Farm Winery. Please RSVP by September 14: temd.shulcloud.com/form/EmptyNestersSept21

from the Cantor

Shalom, friends! I just returned from an incredible week making music at Hava Nashira with many of my friends and colleagues. Founded over thirty years ago by Debbie Friedman z'l and Cantor Jeff Klepper, Hava Nashira is a respite for cantors, students, camp songleaders, rabbis, and pretty much anyone in the Jewish world who loves to sing to learn and to celebrate communal song. The harmonies (and friendships) we made together, led by the masterful (and our own) Cantor Rosalie Will, are still ringing in my ears!

While I write, I hear the joyful music we made together at Friday services January 3rd- the first Shabbat of 2025, in much the same way I am re-experiencing the communal harmonies I created with friends and colleagues at Hava Nashira. Whether you are an experienced Hebrew reader and singer, or a novice, whether you have been singing all of your life, or you are an "under the breath" singer, music, particularly prayer music; what we call liturgical music brings every soul in connection together. When we come together in worship, we experience a link together that transcends time and space. When we pray simple melodies or contemporary settings we are both touching our ancestors and reaching into the future. As we stretch into the past and the future, the music is what keeps us grounded together as one unit, a kehilla kedosha-sacred congregation, elevated and embraced, and ultimately empowered with the entire community present with us in each breath.

This kind of presence is the beginning of the beautiful and deep relationships I hope to cultivate with each of you. My vision and mission over this summer (and of course over the coming year) is to get to know every one of you. There will be many opportunities for us to get to know each other in community in various gatherings, services, and more. I want to extend my always open door policy to you as well. Please drop by and say hello! You are always welcome whether it is casual conversation, or you are in need of a caring and pastoral presence. I am here for you. I will also be making my way through reaching out to all of you.

As we build our community towards the most sacred days in our Jewish calendar, I recognize this year will be especially new for all of us, as we come together as a community for the first time. Some of us will know each other a bit more than others. Please know I will be working hard to learn Temple Emanuel, its history, people and minhag haMakom (traditions), so that our High Holy Days and services truly feel like home for everyone.

Robert Browning tells us "Who hears music feels [their] solitude Peopled at once." Jacob's Ladder, a

Sulam in Hebrew, also means melody. In fact, rabbis of the midrash teach that the angels that were going up and down this Sulam were singing. Jacob was connected through a ladder of song from earth to heaven and beyond. These stories elevate my soul, and are in my ear as I look forward to joining your community. May we begin the journey of feeling "Peopled" together. May our prayers, like Jacob's ladder, stretch us from earth to heaven and beyond.

B'Shira-In Song,
Cantor Lauren Adesnik



My vision and mission over this summer (and of course over the coming year) is to get to know every one of you.

"Who hears music.."

MEET CANTOR LAUREN ADESNIK

Friday July 11 6:30pm Erev Shabbat Service followed by a Festive Oneg

from the President



As I reflect on my first year as Temple Emanuel's President, I'm struck by how this community has faced extraordinary challenges with grace, determination, and deep commitment to one another. This has been a year of profound transitions—some planned, others painfully unexpected. Yet through it all, we have demonstrated remarkable resilience and the enduring strength of our temple family.

Our community was deeply impacted by the sudden illness and passing of our beloved Executive Director, Dianne Neiman. Her dedication to Temple Emanuel over the past 13 years shaped who we are today. Her absence is felt daily, yet her legacy continues to inspire our work. This year also brings the departures of Cantor Lindsay Kantor and Shaliach/Youth Director Snir Holtzman, who have contributed significantly to our spiritual and educational life.



In the face of these leadership transitions, I have witnessed tremendous commitment from our remaining clergy, senior staff, and lay leaders. Rabbi Adam has taken on additional responsibilities with grace and compassion. Laura Naide and Dana Robinson provided steady leadership ensuring our school programs not only survived but thrived. In February, we brought Susan Zemsky out of retirement to serve as acting Executive Director.

Board members and committee chairs have volunteered countless hours, ensuring essential functions continue without interruption. I'm particularly grateful to Joan Lorber, Lisa Reff, Rachel Joseph, and the search committees for their tireless work preparing Temple Emanuel for the future.

These internal challenges have unfolded against unprecedented political turmoil directly affecting many in our congregation. We've responded by providing resources for federal workers including dedicated communication channels, member services, in-person events, and a Temple website page listing services for displaced federal workers. As a federal employee myself, I understand firsthand this situation's impact on our community. We'll continue supporting displaced federal workers, including providing financial resources.

Regarding our financial situation, we approved a deficit budget this year, driven primarily by our commitment to accessibility through membership commitment relief which has grown to over \$570,000 in financial assistance. This ensures no family is excluded from our community due to economic circumstances, reflecting our core values—that we are stronger together and financial constraints should never separate anyone from their Jewish community.

While this financial model isn't sustainable long-term, it represents our priorities during this transitional period. We have recently formed a task force, led by Mollie Katz, to develop a strategy addressing our membership financial situation while maintaining our commitment to inclusivity.

After a thorough search process, we hired a new Executive Director, Alissa Miller, who begins July 1st. Alissa comes from nearby Temple Beth Ami, where she served as Operations Manager, bringing substantial synagogue management experience and fresh perspective to guide us through our next chapter. Additionally, Cantor Lauren Adesnik will join us for a one-year interim term, and we are hiring a new Shaliach-Youth Director.

Despite our challenges, this year included many moments of achievement and connection. Our social action committee hosted town halls and led resource groups for civil servants. Our Women of Reform Judaism partnered with the Global Mitzvah Committee and Brotherhood to sponsor a Sock Hop concert raising nearly \$5,000 for projects in Israel and globally. The membership committee launched initiatives to recruit and retain members, including plans for a senior outreach program. The Brotherhood continued providing ushers, funding Temple initiatives, and organizing community events. The Israel engagement committee organized World Zionist Congress events, sponsored a brunch with a local Israeli scholar, and organized Yom Ha'Atzmaut programming.

Looking ahead to my second year as President, I am focusing on three priorities: supporting our new leadership team's integration, strengthening our financial sustainability, and deepening connections within our diverse community, including additional support for federal employees and contractors. Our mission remains constant—to create a vibrant Jewish community where each person finds meaning, purpose, and belonging.

It has been an honor to serve as Temple President this year. The strength I've witnessed reinforces my belief that Temple Emanuel will not merely survive these transitions but will emerge stronger and more united. As we move forward, I invite your continued partnership, ideas, and engagement.

Thank you for your trust, your patience, and your commitment to Temple Emanuel. Together, we are writing the next chapter of our congregation's story.

Andrew Stavisky

from the Executive Director

I am thrilled to be joining you as Temple Emanuel's Executive Director starting July 1, 2025. It is an honor to have been given this immense responsibility to care for and help nourish your sacred community, as well as work with the tremendous team of staff, lay leaders, and clergy who put forth heroic efforts to maintain temple operations during this most challenging and sad past year. I have been incredibly impressed by the creativity and commitment of so many who made this happen, and I have been touched by how welcoming everyone has been to me in joining the team. I am eager to help rebuild operational efficiencies and forge ahead into FY 2026 with a sense of renewed energy, a commitment to living Jewish values, and meeting - or hopefully surpassing - the needs and expectations of the congregation.

I come to Temple Emanuel as my second "gig" in synagogue work, having served as Operations Manager at Temple Beth Ami in Rockville for the past four years. This has been somewhat of a second career of mine, having jumped at the opportunity to use my prior experience in nonprofit program management and intelligence analysis to work at my temple, which I very much considered my happy place. I learned much more than I ever thought I wanted to know about commercial HVAC systems, Montgomery County fire safety inspections, and how to leverage police and modern security upgrades to keep a Jewish community safe. I was also able to spend time with the most precious of preschoolers, help congregants plan their simchas, and developed a whole cadre of stand-in Jewish mothers who visited temple frequently and always had something funny or "helpful" to say to me. Most importantly, however, I learned that it is possible to be surrounded day in and day out by colleagues who are more like family, and how fulfilling it is to do the behind-the-scenes work that results in congregants feeling supported and cared for during their most joyful, as well as difficult, moments. I also feel lucky to work in the "bubble" of the Jewish community, especially since 10/7, and have felt the importance of belonging to a synagogue and having a place to go in times of crisis grow exponentially since then. I fully hope and expect that the environment at Temple Emanuel will also soon feel like a family to me, and it is my goal to ensure all congregants similarly feel that temple is their second home.

I would be remiss if I didn't mention that I was a congregant and ECC parent at Temple Emanuel several years ago, when my oldest daughter Jana was 3 1/2 and very much not enjoying how much her new twin baby sisters occupied her mother, and the full-day program at Temple Emanuel was the perfect solution. We loved visiting her classroom and seeing how she was growing and learning, and I still recall the joyful holiday celebrations and family Shabbat services throughout the year. When we moved away from downtown Bethesda and it was time for my younger daughters to attend preschool, the part-time program at Temple Beth Ami (which was 10 minutes from our house) was better suited to our needs at the time, so there we went.

Lastly, it was suggested to me that I mention a bit about my hobbies and interests in this introductory article, which I am happy to do. I love cooking, traveling, gardening, Jewish genealogy, Jewish geography, and trying to make babies and preschoolers laugh. In addition, I do not love sci fi anything, weeding my garden, and when people don't eat the food I make.

I am so looking forward to meeting as many congregants as possible, and learning the special culture and traditions of Temple Emanuel. Please do stop by and say hello and let me know what you enjoy doing at temple. If there is ever anything I can do to improve upon your experience, this is also something I would want to know.

Thank you, again, for welcoming me into your beautiful community, and I look forward to many years of joyful moments together.

Wishing you all my best,

Alissa Miller



Thank you, again,
for welcoming
me into your
beautiful
community, and
I look forward to
many years of
joyful moments
together.

from the Director of Congregational Learning



REIMAGINING RELIGIOUS SCHOOL: A FRESH START FOR 2025-2026

At Temple Emanuel, we believe Jewish learning should be engaging, purposeful, and grounded in community. Guided by our core values of *Kehilla* (community), *Limmud* (learning), and *Ruach* (spirit and Jewish identity), we're introducing a new Religious School schedule for the 2025-2026 year that strengthens Hebrew instruction and supports meaningful Jewish learning. Starting this fall, students in Grades Pre-K-7 will experience a revised Sunday structure. Grades Pre-K through 3 will have a longer morning with more time for Hebrew, Jewish Studies, and hands-on learning. Students in Grades 4-7 will spend 75 minutes each on Hebrew and Jewish Studies. Grade 7 will follow this format for one more year before moving to Tuesday evenings in 2026-2027, aligning with our Upper School and allowing for more robust and age-appropriate learning opportunities.

We are adding a fourth core value for next year: *Hachala* (inclusion). This reflects our commitment to welcoming every learner and creating a school culture where all students and families feel a sense of belonging. Our Director of Learning Inclusion, Kim Hughes, continues to push us forward to recognize and value the diversity of our congregation and we are all better for these efforts.

Our new Hebrew approach is informed by the *Onward Hebrew* model (onwardhebrew.org), which emphasizes language exposure before decoding. This includes Hebrew-rich *tefillah* (prayer), *Hebrew Through Movement*, and Jewish Life Vocabulary. Formal Hebrew reading begins in Fourth Grade, after students have built familiarity and confidence with spoken Hebrew. I will be attending the NewCAJE Conference for Jewish educators in Baltimore this summer to immerse myself in this approach by learning with expert teachers from around the United States.

Although school is in "recess," summer can also be a time for Jewish growth! Jewish camp offers a setting where kids can live Jewish values, gain independence, and form lasting friendships. Whether it's a URJ camp or another Jewish setting, camp reinforces the learning and identity-building we strive for during the year. It is equally valuable, however, to "find the Jewish" in your summer activities whether or not they include camp. My children still tease me about finding a Jewish museum, walking tour, or deli in almost every place we have vacationed. And celebrating havdalah on a warm summer evening is a beautiful and easy way to perform a mitzvah.

We are also in a season of transition and opportunity. We are actively interviewing candidates for our next *Shaliach* and Director of Youth Engagement and may have hired someone by the time you're reading this! We are deeply grateful to Snir Holtzman for the incredible energy, warmth, and creativity he brought to this role over the past three years. Thanks to his strong leadership, we have a vibrant foundation to build on as we move into this next chapter.

Religious School enrollment will open in June, and I look forward to seeing you back in school this fall (if we don't see each other sooner). I wish you all a wonderful summer full of adventure and opportunities to rest. Don't forget the sunscreen!

TEMPLE EMANUEL SOCIAL COMMITTEE

SAVE THE DATE

Events sponsored by the Social Committee of the Board of Education

Sunday, September 7 - Meet the Parents - Coffee and Sweets

Saturday, September 13 - Sweet New Year Apple Picking



from the Early Childhood Center

Temple Emanuel Early Childhood Center will hold two open house mornings in Fall 2025, tentatively scheduled for October 13 and November 11. Please check back soon for registration information.

Temple Emanuel Early Childhood Center welcomes children 18-months to 5-years old, from 8:00 am to 6:00 pm, daily. Twelve-month, ten-month, and half-day contract options available.

Schedule a tour with Dana Robinson, Director of Early Childhood, at dana@templemanuelmd.org or call (301) 942-2000.

Learn more on our website at www.templemanuelmd.org/early-childhood-center/



from the Shaliach

Shalom Everyone!

It's pretty crazy, thinking about the fact that this is the last Kol Kore I'm writing as the Director of Youth Engagement and *Shaliach* of Temple Emanuel. As humans, we tend to "repress" or "postpone" thinking about endings. It's mainly because they seem so far away. In fact, they seem so far that it's even hard to imagine what they will look like.

When I first started here at Temple Emanuel, I couldn't even imagine falling in love and feeling so immersed in a community the way I did here. In our journey together, through tough times and happy times, we learned about each other, supported one another and created friendships that will last a lifetime.

Transitions are never easy, but I truly believe that what we've built together is lasting. I know that you will keep the special ruach of this community in everything you do, and I hope that a little piece of me will stay with you forever.

I've shared before that I believe that my role as an educator is not to put out fires, but to plant trees. I'm confident that the trees we planted together will thrive and I'm excited to see them grow.

As I prepare to say *l'hitraot*— see you later not goodbye—I'm filled with gratitude. Thank you for welcoming me so warmly, for trusting me, and for letting me be part of your journeys. Though I'm stepping away from my role here, the memories we've created and the lessons we've shared will stay with me always. Besides, you'll never get rid of me! I'll make sure to stay in touch, and please, do so too!

Thank you for letting me be part of your lives. It has been my honor and my greatest gift.

Love Always,
Snir



Women of Reform Judaism

Temple Emanuel's Women of Reform Judaism (WRJ)/Sisterhood welcomes you to our activities this year. Membership in WRJ is a great way to get to know women of different ages and backgrounds through our annual retreat, drop-in Mahjong games, brunches, discussion groups, and other programs.

Any person identifying as female who is committed to the goals and objectives of the Temple Emanuel WRJ, its Congregation, and the Jewish community, is eligible for membership. Summer is a great time to start this year's membership whether joining WRJ for the first time or rejoining WRJ if you're currently not a member. If you have not yet joined WRJ for next year, you can do so through your Shulcloud account. If you have any questions, please contact Lucia Saperstein, our Membership Vice President: lsaperstein@gmail.com

As we look forward to the upcoming year, we want to take this opportunity to thank all the volunteers (bagel table, retreat, special events, seder, services, readers' salon, Rosh Chodesh, and dinners) who helped us make this past year so successful.

Read on and learn about some of what WRJ has in store for the coming year (dates will be announced once confirmed). Want more information or have questions? Contact us at: wrj@templemanuelmd.org

Mahjong will continue monthly on Sunday afternoons from 1-3pm. Mark your calendar for September 14th and be on the lookout for additional sessions this coming year. This will include sessions that will provide instruction on how to play Mahjong in case you don't know. These will be open to all WRJ members. In addition, other Temple members who are not members of WRJ can come twice to give it a try. Contact Michele Parsonnet at mparsonnet@gmail.com for more information.

Creative Crafts and Conversation - meets the 2nd Wednesday at 2pm and the 4th Wednesday at 7pm. Join others in undertaking a craft and having a chat. It will continue in the summer so long as there are enough people to attend. To get on the mailing list, please email Sandi at smar1020@gmail.com

Rosh Chodesh and Readers Salon - will continue in the fall. Rosh Chodesh, or the new moon, is an ancient Jewish women's holiday, a time for Jewish women to come together and celebrate. Our Temple Emanuel Rosh Chodesh meetings include brief opening and closing ceremonies along with spirited discussions of topics related to Judaism and women. Some topics we've discussed in the past include body image, fearlessness, ethical decision-making and Jewish superstitions. We have also had baby naming ceremonies and a swimming pool mikvah. Readers' Salon gives you the opportunity to read articles from current publications, discuss them with friends and share in a casual potluck meal. It's like a book club but with only 20 minutes of reading!

The **Women's Retreat** is scheduled for January 9-11, 2026 in Kent Narrows, MD. This outing is always a highlight of our year, so mark your calendars now and be on the lookout for information in the fall.

WRJ holds its **Monthly WRJ** meetings on the third Wednesday evening of every month beginning at 7pm on Zoom.

Jennifer Mann Fields and Lisa Reff
Co-Presidents WRJ

Men of Reform Judaism/Brotherhood

At the Brotherhood's annual meeting on May 4th, members paused to celebrate a successful year and presented our annual awards. This year's two Ken Salins "unsung heroes" were Stan Fagen and Ian DeWall, for both of their steadfast abilities to represent the Brotherhood on a variety of other Temple Committees. The now-annual Global Mitzvah Sock Hop was a huge success in which both Stan and Ian were instrumental; Stan, in particular was a go-to representative of Brotherhood on a number of occasions, notably for the unveiling of the Brotherhood-supported Inclusion Cart, and Ian's ongoing service to the Temple Garden adds both figurative and literal flavor to the Temple Emanuel mission of Tikun Olam.

This year's Bob Sporn "man of the year" honoree was our Social Committee Chair Bruce Dincin. Bruce's seemingly tireless efforts to organize social events built community in a particularly challenging time, raised the profile and impact of Brotherhood immeasurably this past year, and set a new template for organizing Temple events for everyone.

As Brotherhood begins to gear up for the fall, please note that in August, we'll plan to host our annual Grounds Cleanup. Please check Grapevine in July for details as we finalize a date for this event.

And please stay further tuned for our full fall calendar, as we look forward to another exciting year of service and fellowship!

Paul Bolstad



GLOBAL MITZVAH PROJECT

GMP Increases Help to Needy International Communities



Judaism's essential value of tikkun olam, to help repair, heal or improve the world, needs action more than ever since the U.S. government has withdrawn most of its help to the world community. The Trump administration has announced termination of more than 5,000 foreign aid projects in dismantling the U.S. Agency for International Development (USAID). These cuts have had devastating impacts on global health programs (e.g., maternal and child health, HIV/AIDS, malaria, tuberculosis), as well as on education, clean water, and food security.

Philanthropic programs like Temple Emanuel's GMP are urgently needed to maintain international assistance. In this, our eighteenth year, GMP is grateful that increased fund raising resulted in our largest number of charitable projects. In particular, we thank WRJ and Brotherhood for co-planning and supporting the February "Sock Hop", which substantially bolstered our annual concert receipts. Unsolicited contributions to GMP also increased this year.

The following seven projects were supported in 2024-2025:

- **Young Mothers & Early Childhood Education Program, Zambia** (with Lubuto Library Partners) - purchased necessary materials (carpet, puppets, books for mothers to read at home) and to cover costs of training volunteers to assist the program coordinator. [\$2,000]
- **Sakale Health Center, Karamoja, Uganda** (with Innovation: Africa) - acquired essential medical equipment (blood pressure machines, patient monitors, steel medical carts, stretchers) to improve patient outcomes and save lives. [\$2,000]
- **Hato Rincon, Panama** (with Engineers Without Borders) - obtained computers to document the language and culture of indigenous people living in remote mountains, to help them apply for government services, and get access to better health care. [\$2,000]
- **FUWANA, West Africa** (Fula Woman Association of North America) - members share Fula language and culture from seven countries (Burkina Faso, Cameroon, Mali, Cote d'Ivories, Guines, Mauritania, Senegal). Supported girl's education by providing basic school supplies (backpacks, uniforms, writing materials) to 100 students in schools of two countries. [\$2,000]
- **Improving Mental Health Website Initiative, Zambia** (with The Lotus Identity) - developed an initial website for LGBTQ women and others that contains critical self-care resources, including referrals to therapists. [\$2,000]
- **Hand in Hand, Israel** - a network of Arab-Jewish bilingual, multicultural schools and parent communities working to build a mutual society of equality and trust. Donated funds for books and materials. [\$1,800]
- **Kindergarten Safe Room, Israel** (with Living Together) - Kibbutz Evron, the first bilingual kindergarten, six miles from the Lebanon border, had to suspend operation because it lacks a safe room for retreat in the event of a missile alert. Helped fund construction of a safe room. [\$700]

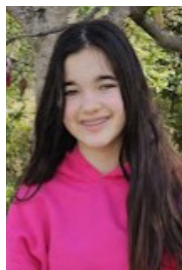
Congregants are welcome to join the GMT or propose new projects.

Stan Fagen & Caroline Smith DeWaal, Co-Chairs

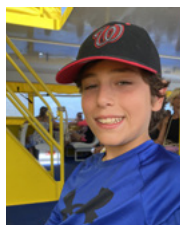
stanfagen@gmail.com

dewaalcaroline@gmail.com

Summer 2025 B'NEI MITZVAH



LUCY GERSON is an eighth-grader at North Bethesda Middle School. In her free time, she enjoys rock climbing, sewing, and reading. For her mitzvah project, Lucy sewed bookmarks and donated them to local libraries. Lucy is excited to celebrate her bat mitzvah with her friends and family.



BRODY GOTTFRIED Brody attends Eastern Middle School where he is enrolled in the Humanities Magnet Program. He is an avid baseball player and spends his time on the baseball diamond catching, playing second base or in left field. His love of the game made supporting Home2First, a foundation that provides baseball equipment to youth in underprivileged areas worldwide, an obvious choice for his Mitzvah project.

Brody spends his summers at Camp Harlam in Pennsylvania. He is very much looking forward to celebrating his bar mitzvah in September with his friends and family.

ART IN HAMAKOM An Opportunity To Exhibit Your Art

We are always looking for artists to exhibit their work in the HaMakom. The HaMakom gallery is a space for Temple Emanuel members, their family members, and any local artists to display their art or craft for the Temple community to view. We want a minimum of 10 items and they need to be ready to hang on hooks. Also, if you like you can sell your art and host a reception. For more information, please contact the main office to be connected with Lori Gordon.

INCLUSION

At Temple Emanuel, we are fostering a culture of learning inclusion, acceptance, and kindness within our community.

Inclusion is a Jewish value. An inclusive learning environment benefits everyone! Learn more on our website at <https://www.templeemanuelmd.org/about/accessibility-and-inclusion/>

Contact Kim Hughes, Director of Learning Inclusion, if you have any questions or ideas. inclusion@templeemanuelmd.org



MEAL OF COMFORT COMMITTEE

"Serving on the Meal of Comfort Committee (formerly the Bereavement Committee) has been one of the most meaningful and appreciated mitzvot that I have performed as a Temple member."

The Meal of Comfort Committee is looking for volunteers to continue the Temple tradition of providing meals to bereaved families returning from the cemetery. There are several ways to help, each requiring only an infrequent, small commitment of time. But in order to provide this service to families, we need a large number of volunteers so that, on short notice, we can be certain to have sufficient volunteers available. If you would be interested joining with others in performing this mitzvah and/or would like more information, please contact Bobbi Fishback at fishbackbl@gmail.com or Linda Wolpert at lgwmoose@yahoo.com.

MEMBER UPDATES

CONDOLENCES

Susan Berman on the death of her uncle, Sanford Schonberger

Matthew Joseph on the death of his father, Richard Joseph

Amy Lowenstein on the death of her brother, John Lowenstein

Ariel (Aaron Bergman) Novick on the death of her father Mark Novick

Ira Schwartz on the death of his mother, Constance Schwartz

Esther Starobin, on the death of her foster brother

Alan John Harrison

THANKS TO OUR DONORS (representing donations from March 1, 2025 to May 28, 2025)

Temple Emanuel gratefully acknowledges your gifts, and those honored are informed of your thoughtfulness. Your contributions support the work of the Temple.

BEREAVEMENT FUND

Cynthia Gerecht

Jonathan Golden Harris

BYER JEWISH ENRICHMENT FUND

Richard & Linda Astor

Suzanne and Aaron Auerbach

Susan Berman

David & Bobbi Fishback

CANTOR'S MUSIC FUND

Dr. Morris Antonelli

Richard and Linda Astor

Wendy & Richard Levine

Rachel Rhodes, Temple Sinai

Sora Newman

CHAI COLLECTIVE

Stephen & Joette Alkire

Sue and Paul Berman

Michael DeMarco & Stacey Singer

Stanley & Val Fagen

David & Bobbi Fishback

Jennifer & Michael Freedman

Ardis & Ernest Freedman

Candace Groudine & Gloria Shepherd

Daniel & Terri Halpern

Martha Hirschfeld & William Saletan

Matthew & Rachel Joseph

Dina Korman

Adam Landsman & Elizabeth Tully

Marie Isabel Laurion

Ken & Melanie Levy

John Miller & Diane Raynes-Miller

Laura & Eric Naide

Glenn Northern & Caryn Nagler

Craig Packard & Joan Dubinsky

Jennifer Pollack & Scott Goldschmidt

Shalom Rosenberg & Rabbi Adam Rosenwasser

Stephen & Dian Seidel

Andrew Stavisky & Nora Memmott

Kate & Alan Tabachnick

Albert & Donna Tanenbaum

Robert & Janice Voigtman

Steve Weiss & Kim Hughes

ENDOWMENT

Jonathan Golden Harris

Freddy & Janet Turim

GENERAL OPERATING FUND

Stephen & Joette Alkire

Matthew & Regina Koch

Sue Rudo

Jeremy Maxwell Sharp

Joan & Marc Zlotnik

GLOBAL MITZVAH PROJECT

Richard and Linda Astor

Caroline & Robert Calder

Ian & Caroline DeWaal

David & Bobbi Fishback

Ilana Weinberg

HENRY BLUESTONE CULTURAL ART FUND

Thomas Holzman & Alison Drucker

MARK MANN PAVILION / PLAYGROUND / LANDSCAPE FUND

Ms Gloria Brown

Ellen & Arnold Hoffman

ONEG SPONSORSHIP

Jacob & Tanya Bitterman

Ian & Caroline DeWaal

David & Bobbi Fishback

Ardis & Ernest Freedman

Jason Gerson & Amanda Vogel

Kathryn & Adam Mendelson

R. Allan & Dolores Mufson

Sora Newman

Stefanie Weldon & Daniel Lahn

RABBI'S DISCRETIONARY FUND

Anonymous

Richard and Linda Astor

Suzanne and Aaron Auerbach

Marla Banov

Jane Binder & Lawrence Silber

Adele Crawford

Stanley & Val Fagen

Rose Feinberg

Laurence & Bonnie Fields

Caren Ginsberg

Jonathan Golden Harris

Toby Zankel Heilweil

Ellen & Arnold Hoffman

Henry & Marilyn Jordan

Thea Joselow & Mikhail Zhurkin

Harvey & Ellen Karch

Dina Korman

Jules & Kerry LeBoyer

Wendy & Richard Levine

Howard, Karyn, Mira and

Jacob Mann

Ms. Zelda McBride

Peter Meyersohn &

Annette Needle

Rebecca Musher Gross

Marcie Stein

Darla Kashian

Sara E. Miller

Debra Moses

Joanne Neiman

Ronni Zankel November

Jonathan & Michele Parsonnet

Irwin Pescov

Sue Rudo

Rochelle Granat and Rhoda

Schulzinger

Mrs. Gloria Sherman

Lois Simpson

Susan Sloan

Esther Starobin

Sydney & Phyllis Stearman

Al and Donna Tanenbaum

Freddy & Janet Turim

Daniel Webster & Jessica Bernstein

Joan & Marc Zlotnik

SANCTUARY ENHANCEMENT FUND

Irwin Pescov

SPECIAL NEEDS INCLUSION

Richard and Linda Astor

Suzanne and Aaron Auerbach

Carl & Katherine Blake

Noah Bookbinder & Annmarie

Hart-Bookbinder

David & Antonia Levine

YAHREZIT REMEMBRANCES

Anonymous

Marla Banov

Banov and Gould Family

Alan Banov & Sandi Cave

Richard & Geraldine Cooperman

Iris Drimmer

Ardis and Ernie Freedman

Mrs. Shirley Fried

James Fromstein

Sandra Gayle

Joe & Lori Gordon

Henry & Marilyn Jordan

Regina and Matthew Koch

Dina Korman

Debby and Harvey Lazar

Jules & Kerry LeBoyer

Amy Lifson

Mr. Craig Ludwig

Elliott & Sandra Marsden

Ms. Jane Merkin

Bonnie Park-Brodsky

Mr. Robert Polner

Laura Reiter

Allan & Ruja Shemer

Lois Simpson

Samuel Statland

Sydney & Phyllis Stearman

Stephen & Ilene Weiss

David Wilson & Carol Blasberg

YOUTH PROGRAMS & SCHOLARSHIPS

Noah Bookbinder & Annmarie

Hart-Bookbinder

Avraham Lerner & Kara Blond

Sidney & Jody Rosenzweig

July 2025

SUNDAY	MONDAY	TUESDAY	WEDNESDAY	THURSDAY	FRIDAY	SATURDAY
		1	2	3	4 TE Office and TE ECC Closed 6:30pm Erev Shabbat Service Zoom only	5 9am Torah Study
6	7	8	9	10	11 6:30pm Erev Shabbat Service Welcome Oneg	12 9am Torah Study
13	14	15	16	17 6pm ECC Family Picnic 7pm Board of Trustees	18 6:30pm Erev Shabbat Service	19 9am Torah Study
20 5pm Bible and Brews	21	22	23	24	25 6:30pm Erev Shabbat Service	26 9am Torah Study
27	28	29	30	<p>July 25—CONVERSATION ABOUT ISRAEL AND THE ONGOING WAR</p> <p>Our Reform Alumni for Israel fellows will speak about their recent experiences in Israel. Stay after the service to join Rabbi Adam for a conversation reflecting on their remarks.</p>		

August 2025

SUNDAY	MONDAY	TUESDAY	WEDNESDAY	THURSDAY	FRIDAY	SATURDAY
					1 6:30pm Erev Shabbat Service	2 9am Torah Study
3	4 7pm TEECC New Parent Orientation	5	6	7	8 6:30pm Erev Shabbat Service	9 9am Torah Study
10	11	12	13	14	15 Last Day of ECC 12 Month Program 6:30pm Erev Shabbat Service	16 9am Torah Study
17 5pm Bible and Brews	18	19	20	21 7pm Board of Trustees	22 6:30pm Erev Shabbat Service	23 9am Torah Study
24	25 First Day of ECC School	26	27	28	29 6:30pm Erev Shabbat Service Elul Kickoff	30 9am Torah Study

September 2025

SUNDAY	MONDAY	TUESDAY	WEDNESDAY	THURSDAY	FRIDAY	SATURDAY
	1 TE Office and TE ECC Closed	2 Upper School	3	4	5 6:30pm Shabbat Service Elul #2 (Board Installation) Dinner Following	6 9am Torah Study 10am Shabbat Service and B'nei Mitzvah of Lucy Gerson & Brody Gottfried
7 Religious / Hebrew School 7pm KESTY Board Meeting	8	9	10 2pm Crafts & Conversation 7pm TEECC New School Year Reception	11	12 5:30pm Tot Shabbat 7:30pm Shabbat Service Elul #3	13 9am Torah Study 10am Simchat Shabbat Kickoff 7pm Selichot
14 Religious / Hebrew School 1pm Mah Jong	15	16 Upper School	17	18 7pm Board of Trustees	19 6:30pm Shabbat Service Elul #4	20 9am Torah Study
21 Religious / Hebrew School	22 Erev Rosh Hashanah	23 Rosh Hashanah	24 TE Office and ECC Closed 7pm Crafts & Conversation	25	26 6:30pm Erev Shabbat Service	27 9am Torah Study 10am Shalom Shabbat
28 Religious / Hebrew School 10am Garden of Remembrance Service	29	30 Upper School				



Friday September 5 • GUEST SPEAKER AHMED ALKHATIB

He leads Realign for Palestine, an Atlantic Council project that challenges entrenched narratives in the Israel and Palestine discourse and develops a new policy framework for rejuvenated pro-Palestine advocacy.

After the service we will learn more from Ahmed over dinner - RSVP details to come!

We are able to bring in Ahmed Alkhatib to speak to us thanks to a generous gift from the Paul Shnitzer (z"l) Ethics Fund.

We are grateful to Paul's family, especially his daughters, Barbara Clarke and Joanne Darling for their support.



MANNA DONATION IS YEAR ROUND, NOT JUST AT THE HOLIDAYS!

Drop off your food donation in the bin outside HaMakom. Volunteers will make sure it gets to them. Since the High Holy Days we have collected over 600 lbs of food. Please keep Manna in mind when you do your shopping.



Schedule for High Holy Days 5786 / 2025

Tickets and/or registration will be required for some events.

Watch your emails and the website at
<https://www.templemanuelmd.org/high-holy-days-5786-2025> for more details

Friday 8/29

6:30 Elul I

Friday 9/5

6:30 Elul II Board Installation
Guest Speaker Ahmed Alkhatib

Friday 9/12

5:30 Elul Tot Shabbat
7:30pm Elul III

Saturday 9/13

10am Elul Simchat Shabbat Kickoff
7pm Selichot Short Film and Service

Friday 9/19

6:30pm Elul IV

Monday 9/22

7:30pm Erev Rosh Hashanah

ROSH HASHANAH—TUESDAY 9/23

8:45am Tot service

New babies get a blessing

10am Morning Service Sanctuary

1pm KESTY Family service

2:15pm Tashlich

Friday 9/26

7:30pm Shabbat Shuva

Saturday 9/27

10am Shalom Shabbat Shuva

Sunday 9/28

10am/2pm Annual Community Memorial Service
at Garden of Remembrance

Wednesday 10/1

7:30pm Kol Nidrei

YOM KIPPUR—THURSDAY 10/2

8:45am Tot Service

10am Morning Service

1pm Discussion Group

2:30pm KESTY led Afternoon Service

4pm Healing Service

5pm Yizkor

5:45pm Neilah

6:30pm Congregational break-fast

Monday 10/6

6:30pm Erev Sukkot Pizza in the Hut

Tuesday 10/7

10am Sukkot Festival Service location TBD

Friday 10/10

7:30pm Sukkot Under the Stars Service
New Members get a blessing

Saturday 10/11

3pm Rabbi Adam Sukkot Open House
(rain date 10/12)

Monday 10/13

6:30pm Simchat Torah Service

Tuesday 10/14

10am Simchat Torah Festival Service location TBD



High Holy Days 5786 | 2025

At this year's High Holy Days services there will be many opportunities for us to pray together as a community and with our families. Services will be held on-site at Temple Emanuel and at nearby Kensington Cabin Park. Many will also be available for Live Streaming for those unable to attend in person.

Membership

Not a current TE member? We would love to have you join us for the High Holy Days! We offer a variety of services and programs, including some specifically geared for families and young children. Tickets or registration are required for some events. If you have any questions, please contact our Executive Director Alissa Miller.

Prayer Books

Temple Emanuel uses the Reform Movement Machzorim - High Holy Day Prayer Books. This includes separate volumes for Rosh Hashanah and Yom Kippur with updated translations, full transliteration, rich commentary and a beautiful selection of poetry. We encourage you to purchase one set per household adult.

Book of Remembrance

We recall the memories of the departed at the Yizkor (Memorial) Service held on the afternoon of Yom Kippur. The annual Temple Emanuel Book of Remembrance contains the names of members' relatives and friends whose memory we wish to honor. If you are a current Temple Emanuel member and wish to add names to the Book of Remembrance, please watch your mail for details on submissions.

Parking

Please allow ample time for parking. Auxiliary parking may be available some days at local churches; details will be confirmed as we get closer. Please respect any "No Parking" signs and do not park where spaces have been blocked.

Donation Drive For Manna Food Center

Each year on the High Holy Days, Temple Emanuel collects food for the Manna Food Center. Food insecurity is a continuing and serious problem in Montgomery County. Last year we collected over 4000 pounds of food. The food we donated only lasted a few weeks because the need is so great. We will be handing out bags at Rosh Hashanah services. Please take them home and fill them with nonperishable food items and return them on Yom Kippur morning. The Manna truck will be in the Temple parking lot before, during and after the morning service. We will have volunteers available to help unload your car. We hope we can count on your support again this year.

Quiet Space

During Rosh Hashanah and Yom Kippur services a quiet space ("Shalom Space") will be available for individuals or families who would like to take a sensory or movement break. Children should be accompanied by an adult to utilize the sensory tools and movement options.

A social story about Rosh Hashanah and Yom Kippur at Temple Emanuel is available on the High Holy Days website.



KOL KORE / קול קורא

The Bulletin of Temple Emanuel

10101 Connecticut Avenue
Kensington, Maryland 20895-3899
www.templeemanuelmd.org
301-942-2000

Rabbi Adam Rosenwasser

Interim Cantor Lauren Adesnik

Rabbi Emeritus Warren G. Stone

Andrew Stavisky, President

Alissa Miller, Executive Director

Laura Naide, Director of Congregational Learning

Dana Robinson, Director of Early Childhood

Snir Holtzman, Director of Youth Engagement/
Community Shaliach

Non-Profit Org.

U.S. Postage

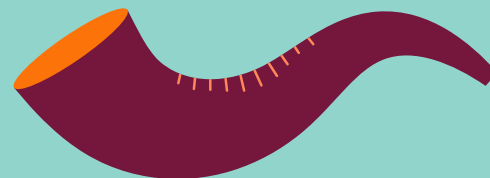
PAID

Suburban MD

Permit No. 5413



האיחוד ליהדות רפורמית
SERVING REFORM CONGREGATIONS IN NORTH AMERICA



**HIGH
HOLY
DAYS**

**Rosh Hashanah
Tuesday 9/23**

**Yom Kippur
Thursday 10/2**

Tickets and/or registration
required for some events.

Watch your emails and the website
at [www.templeemanuelmd.org/
high-holy-days-5786-2025](http://www.templeemanuelmd.org/high-holy-days-5786-2025)

